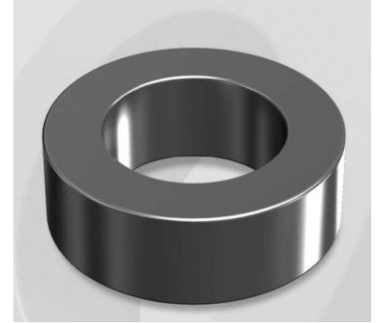


CH467060GT

Electrical Characteristics

Material	Permeability (μ)	AL ± 8% (nH/N ²)	DCB (% min) @ 100 Oe	Coreloss (mW/cm ² , max) @50kHz, 500G
High Flux GT	60	135	77.4	42.2

OD : 467



Core Dimensions

Dimensions		Uncoated		Coated		Color	Packaging
		(mm)	(inch)	(mm)	(inch)		
OD	(Max)	46.74	1.840	47.60	1.874	Black	Box Qty = 72 pcs
ID	(min)	24.13	0.950	23.30	0.917		
HT	(max)	18.03	0.710	18.92	0.745		

Physical Characteristics

Cross Section (A)	Path Length (ℓ)	Window Area (Wa)	Volume (V)	Breakdown Voltage (Vac)
1.990 cm ²	10.74 cm	4.27 cm ²	21.370 cm ³	1,000
0.308 in ²	4.228 in	842,708 cmil	1.3040 in ³	

Winding Information

0% Winding length/turn (cm)		
6.214		
40% winding factor Surface Area (cm ²)		
96.50		
40% Wound Di.(mm)		
OD	ID	HT
53.30	15.26	25.79

Typical DC Bias Performance

